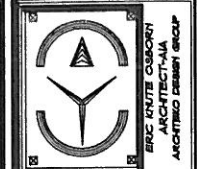
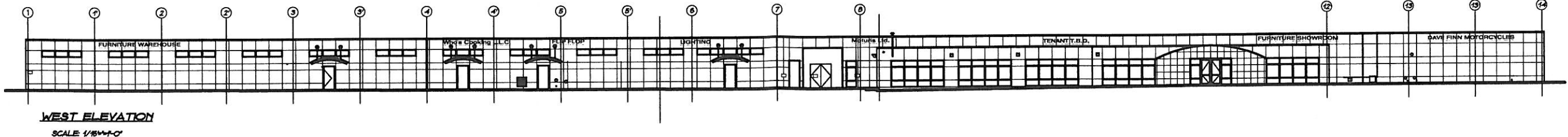
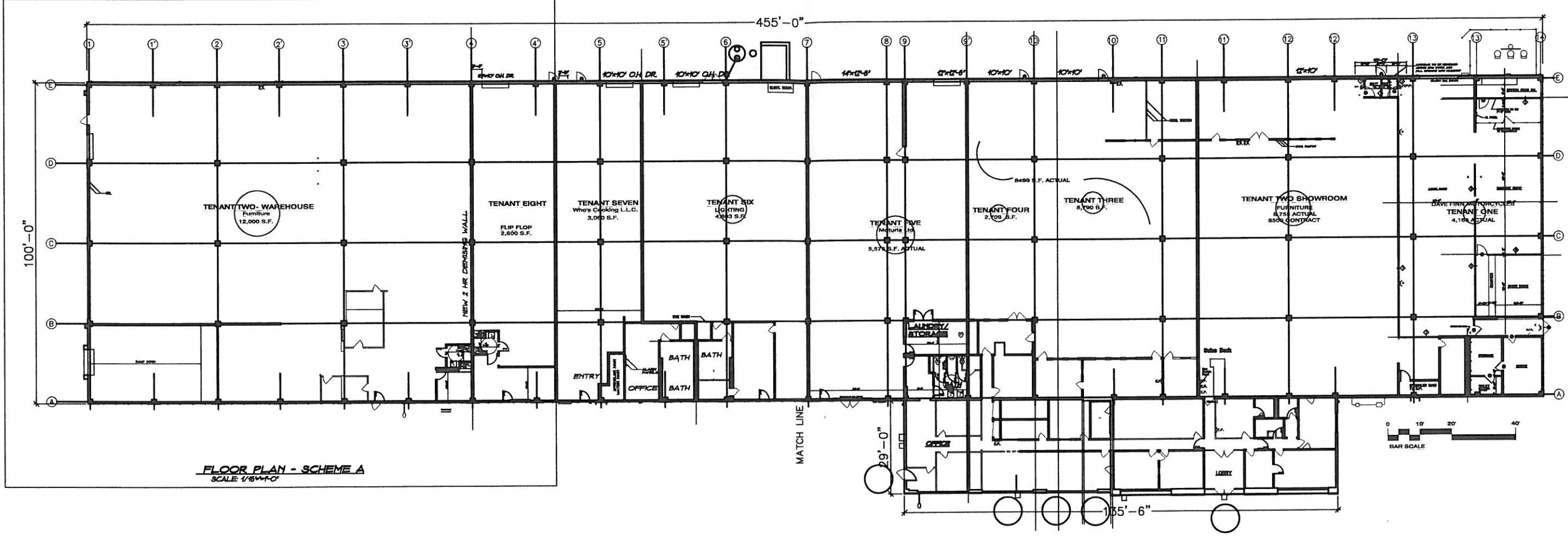


49,500 S.F. OVERALL



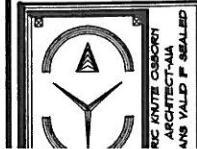
19 NOVEMBER 2003

PROJECT# 2003-CMD-24
SCALE 1/16" = 1'-0"
SHEET A-1

PROPOSED TENANT LAYOUT FOR
DEAN CARSON TAPPAN LLC
256 OAK TREE ROAD
HAMLET OF TAPPAN
TOWN OF ORANGETOWN
ROCKLAND COUNTY, NEW YORK

CONTENTS - THIS SHEET
SPRINKLER LAYOUT
REFLECTED CEILING PLAN
SIDE BUILDING
BUILDING CODE OF NEW YORK STATE
PLANS FOR BIDDING & FINAL REVIEW

ERIC KNUTE OSBORN - ARCHITECT
MEMBER OF AIA/ACCA/IBAC/NAAB/INT/SBA/IB/CBBA
RESIDENTIAL - COMMERCIAL - ADDITIONS
7 JOYCE PLAZA / STONEY POINT, NEW YORK 10980
(846) 947-4644 / FAX 947-4930
1897 ROUTE 207 / ROCK TAVERN, NEW YORK
(846) 496-9000 / CELL 623-7474
LICENSED IN NEW YORK #021-666
LICENSED IN NEW JERSEY #AJ 15522



DO NOT SCALE PRINTS